



Project Baseline

Documentation Only Projects

2016

Introduction

Thanks for your interest in joining this grassroots, aquatic conservation initiative supported by Global Underwater Explorers!

- ▶ By contributing to the Project Baseline database, you are joining a global team of concerned and invested citizens who share aquatic observations, with divers and non-divers alike.

Please take some time to familiarize yourself with the next few slides as we cover how to contribute images and numeric data to our spatial database.



Data Contribution Levels

projectbaseline.org/database/

Teams

Two or more volunteers increase aquatic awareness on local and regional scales

Teams collect data from surface and underwater marine and freshwater environments

Typically visits same aquatic locations

Data are submitted to PB database on a regular basis

Documentation

Individuals collect data from surface and underwater marine and freshwater environments

Typically visits new or same aquatic locations

Data are submitted to PB database on a one-time or regular basis

Baseline Explorer

PB's mobile diving platform

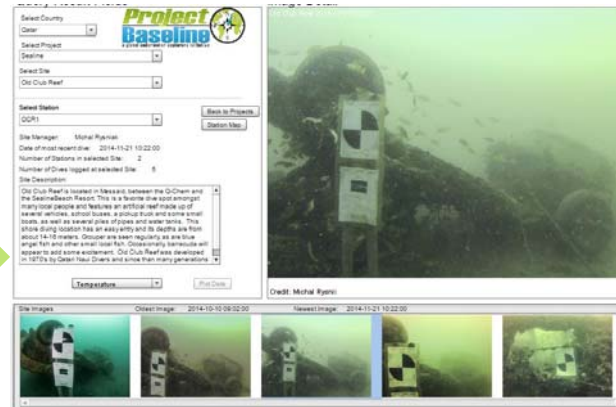
GUE scuba and GlobalSubDive submersible dive teams work in tandem to explore and document marine environments to 1,000'

Typically visits new and same aquatic locations

Data are submitted to PB database on a one-time or regular basis

Types of Data

Images (stills)



Numeric data

Temperature

Visibility

Depth

And more...

Video



Images

- ▶ When submitting one or more images-
 - ▶ Ensure each image is no more than 5MB
 - ▶ Each image is saved as a .jpg
 - ▶ Each image is accompanied by the following information:
 - ▶ Name of photographer (First and Last)
 - ▶ Date image was taken (use long form format) Example - February, 25, 2015
 - ▶ Time image was taken (if available) Use 24 hour clock
 - ▶ Specify Data Collection Location
 - ▶ Use Geographic Coordinates (latitude/longitude)
- ▶ If total size of image(s) is less than 10MB, email as attachment to kc@gue.com
- ▶ If size of image(s) exceeds 10MB, coordinate file transfer through a service such as Google Drive, Flickr, Dropbox, Wettransfer, or your preferred service

Submit one or more images of a specific underwater location or feature (surface conditions are also acceptable) and we'll make sure it gets uploaded in our database.

Numeric Data

- ▶ We accept numeric data without accompanying images
 - ▶ Email kc@gue.com and include the following information:
 - ▶ Name of person responsible for collecting the readings (first and last)
 - ▶ Specify units (meters or feet are acceptable)
 - ▶ Specify Date of Observation - use long form format (example - February 25, 2016)
 - ▶ Specify Time of Observation -use 24 hour clock (example - 14:00 hours)
 - ▶ Specify Data Collection Location
 - ▶ Use Geographic Coordinates (latitude/longitude)
 - ▶ If there are a large number of numeric observations to relay, please organize into a spreadsheet and email kc@gue.com, or share a spreadsheet hosted online using a service such as Google Drive, Dropbox, Wettransfer, etc...

Temperature

Visibility

Depth

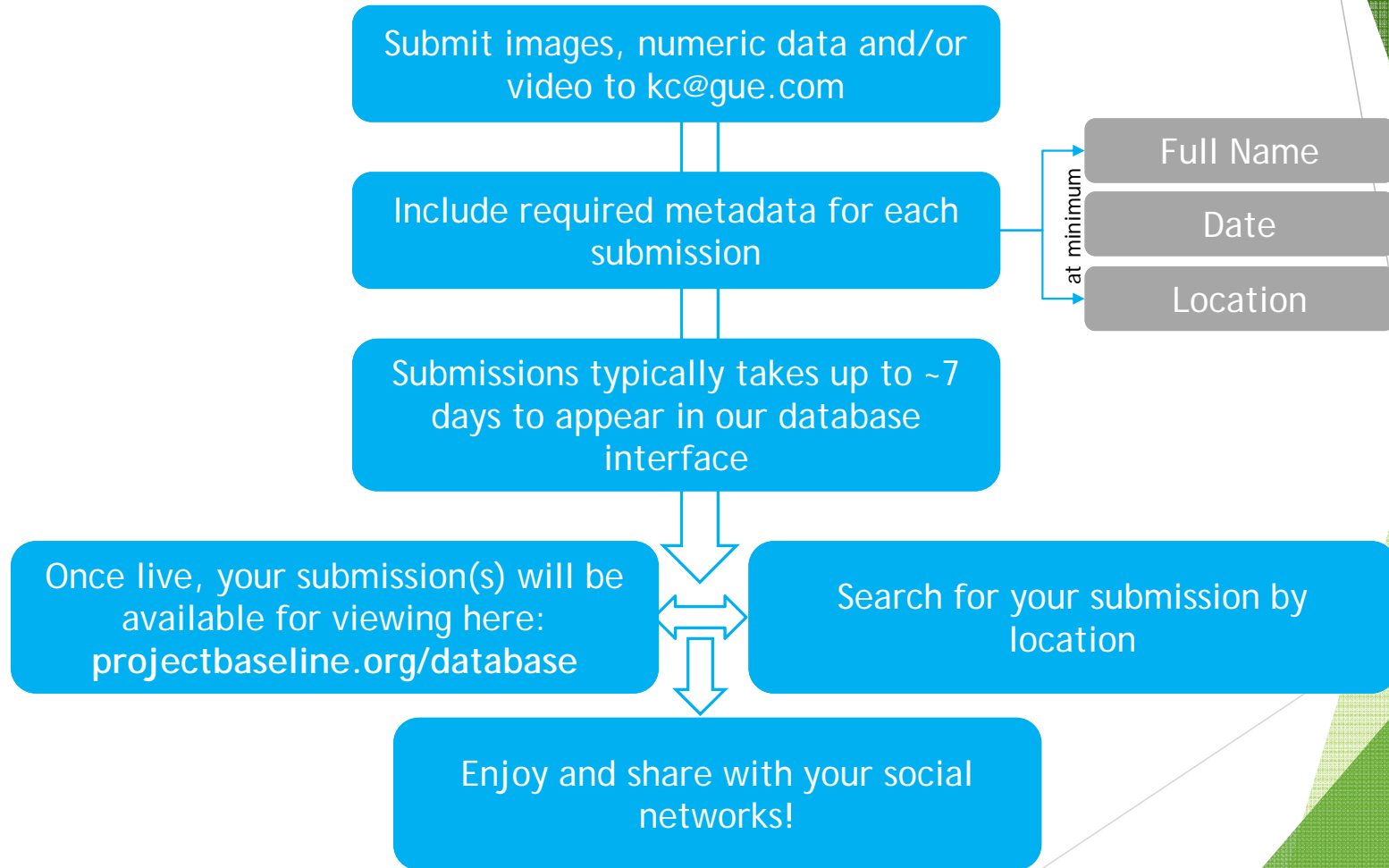
Other common types of data includes:
Alkalinity
pH
Turbidity
Flora/Fauna
Human Impacts
Mapping projects
Water levels
...and much more!

Video

- ▶ We accept video of marine and freshwater environments collected at surface and underwater locations
- ▶ Upload your video to YouTube
 - ▶ Send kc@gue.com notification that the video has been uploaded, and include the following information -
 - ▶ Name of videographer (First and Last)
 - ▶ Date video was taken (use long form format) Example - February, 25, 2015
 - ▶ Approximate geographic coordinates of video location (latitude and longitude)
- ▶ We will add to the Project Baseline YouTube channel and assign to a specific Playlist, if appropriate

307 videos uploaded so far
to our YouTube channel!

Summary



This resource was made possible by Project Baseline donors and Global Underwater Explorers, a 501(c)(3) non-profit supported by members, students, and other generous supporters.

You're only a few clicks away from helping us build a *VISUAL LEGACY* of underwater conditions worldwide.



Donate Today!

www.ProjectBaseline.org/donations

2016