



Project Baseline

Project Initiation

2015

Introduction

Thank you for your interest in joining this grassroots, aquatic conservation initiative supported by Global Underwater Explorers!

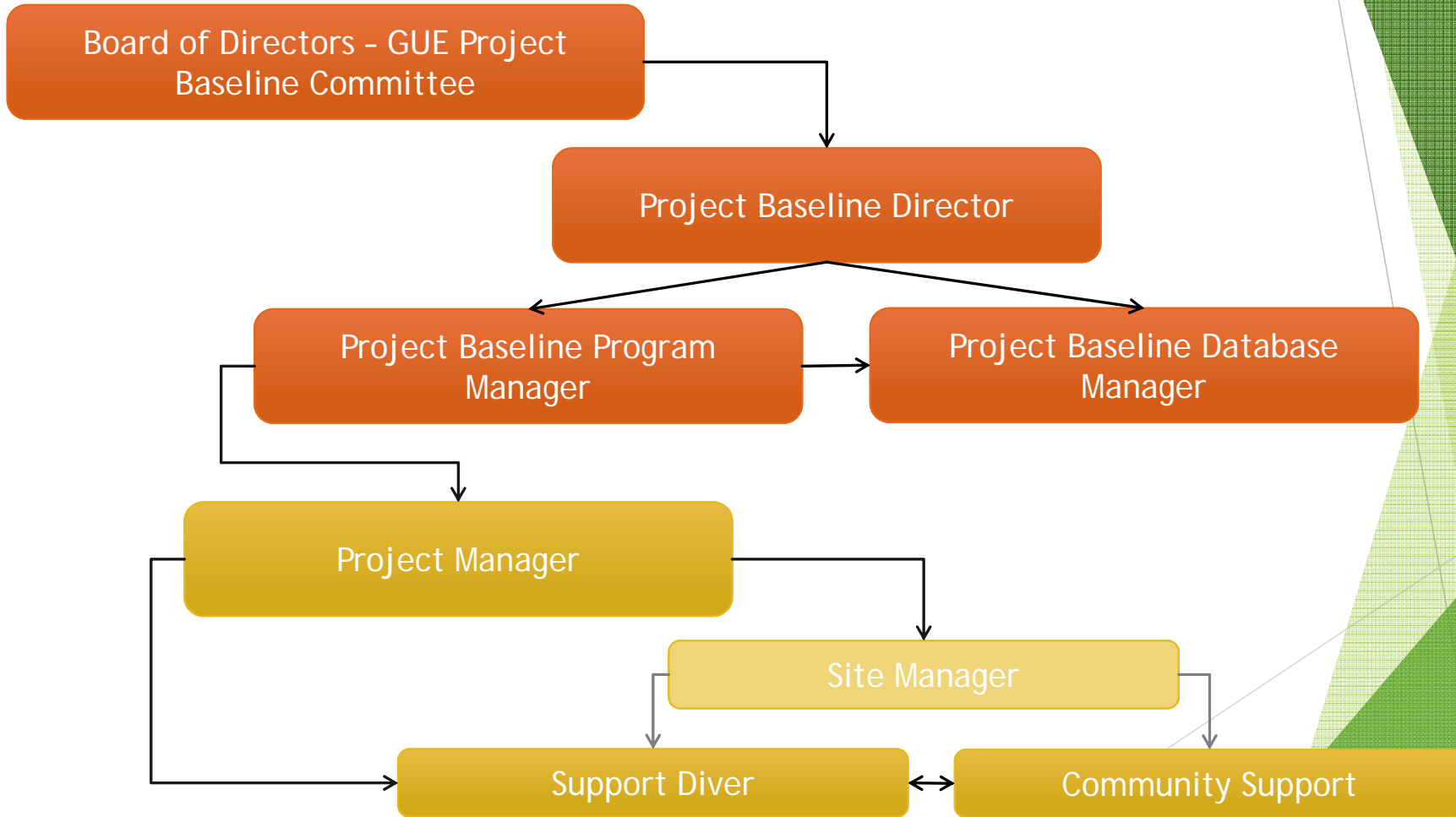
- ▶ Project Baseline is made possible only through the ongoing commitment of hundreds of volunteers around the world. Without their dedication, support, and involvement, we would not be able to work towards the fulfillment of our mission.
- ▶ By contributing to Project Baseline, you are joining a global team of concerned and invested citizens who share underwater observations, normally inaccessible to the public, with divers and non-divers alike.
- ▶ Please take some time to familiarize yourself with the next few slides as we cover how to initiate a Project in your community.



Terms to Know

- ▶ Program Manager: Vanessa Belz (manages all aspects of Project Baseline)
- ▶ Database Manager: Kristie Connolly (organizes, cleans and enters data into the database)
- ▶ Project Manager: Volunteer organizer and leader of a PB Project.
- ▶ Project Members: Volunteers who support the Project Manager and PB Project.
- ▶ Project Area: The entire geographical area encompassed by one particular PB Project.
- ▶ Site: A location (informally known as a *dive site*) within the Project Area that is repeatedly visited by the Project members. It might be a wreck, reef, rock formation, etc.
- ▶ Station: A specific, clearly marked position from which observations are made and measurements are taken.
- ▶ The Project Baseline database: a publicly accessible and searchable online tool that makes PB data (images, measurements, and observations) available to everyone.

Organization of Staff and Volunteers



Creating an Active Project

- ▶ Initiating a Project is a multi-step process.
- ▶ Some steps move faster than others, but each one brings your team closer to being able to share your diving environment with the public in a systematic and meaningful way.
- ▶ By sharing your Project data with the Project Baseline database, anyone with an internet connection can witness changes taking place underwater over both long and short periods of time.
- ▶ Your data enables broad community awareness and action on behalf of the places you love to dive.



Creating an Active Project

Submit the online application

www.projectbaseline.org/starting-your-own-project



Response from Program Manager received

Expect an email from vanessa@gue.com



Project details are confirmed

Send in Station geographic coordinates and data for upload. Receive your customized logo, and Project web page established by Program Manager.

Creating an Active Project

Compose Project, Site, and Station Names and Descriptions

Send these, along with Station geographic coordinates to vanessa@gue.com



Your Project is added to the Project Baseline database

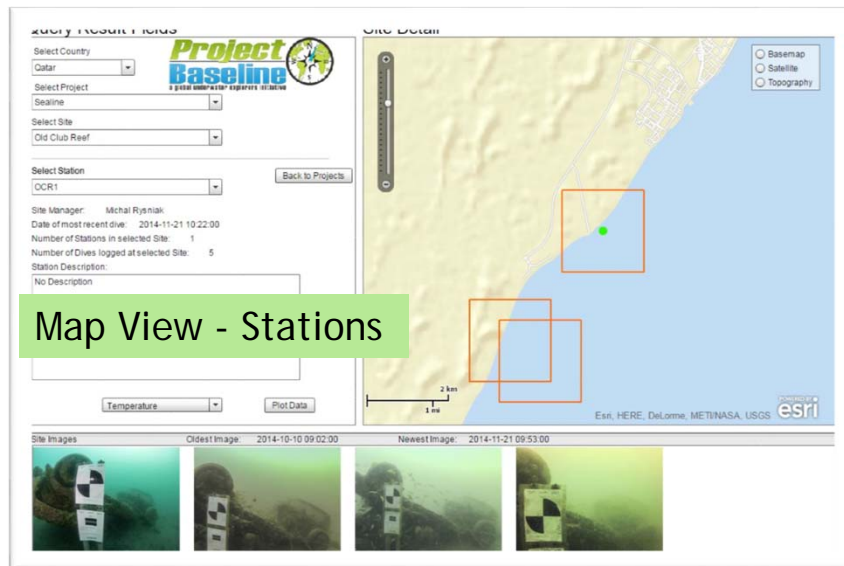
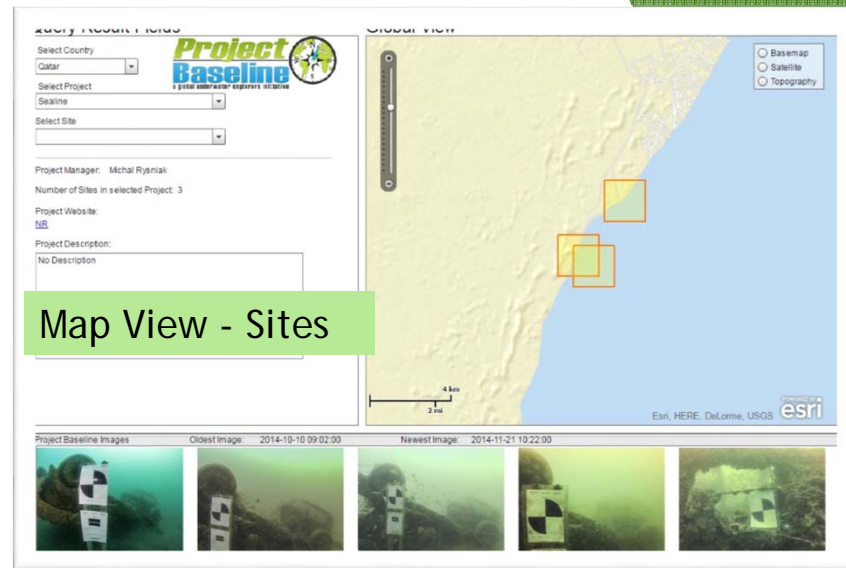


Submit your first Station-level observations via email for upload to the database

Congratulations, your Project is now active!

Results

- To view existing projects, visit www.projectbaseline.org/database



This resource was made possible by Project Baseline donors and Global Underwater Explorers, a 501(c)(3) non-profit supported by members, students, and other generous supporters.

You're only a few clicks away from helping us build a *VISUAL LEGACY* of underwater conditions worldwide.



Donate Today!

www.ProjectBaseline.org/donations

Project Initiation

2015